

SA'S MOST BEAUTIFUL MAGAZINE

NIN
A DECOR
NOUCHER
NORTH
R25 000

THE NEW T
IN SOMERSET

EXPORT QUALITY

SA DESIGN
TRANSFORMS
AN ENGLISH
ESTATE

SPRING-LOADED
17 REASONS TO LOVE THE SEASON

CLEAN LINES, BIG VIEWS
MENLO PARK, LANGEBAAN, CLIFTON, LANSERIA & MORE

SA R60
OTHER COUNTRIES
R52.17
EXCLUDING TAX



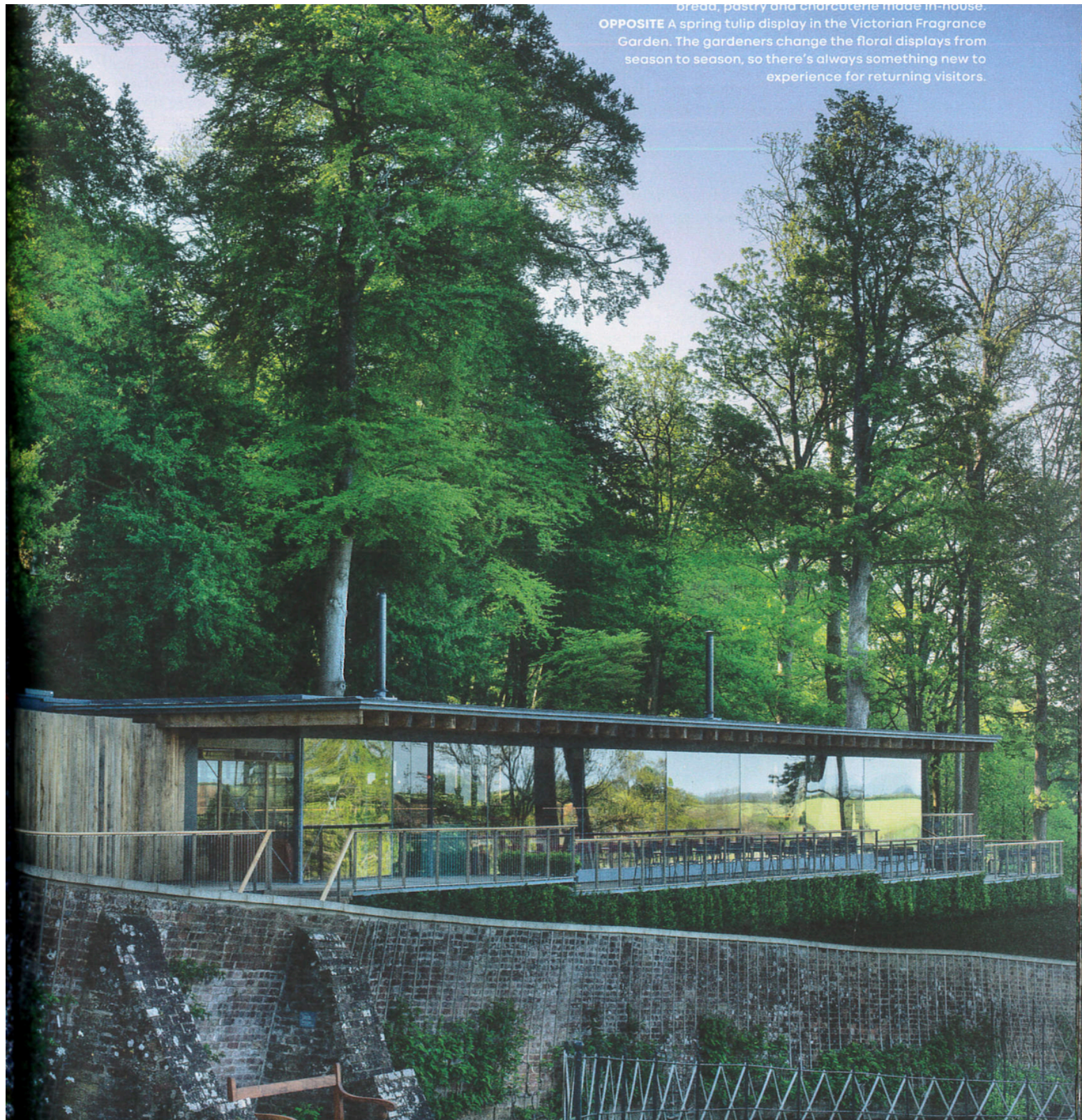


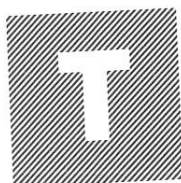
EARTHLY DELIGHTS

PHOTOS DOOK PRODUCTION ANNEMARIE MEINTJES WORDS LEANA CLUNIES-ROSS

The gardens of The Newt in Somerset, recently opened to the public, are a mix of formal planting, wildflower meadows, apple orchards and more. We can't wait to see what other delights the South African owners of this English country estate have in store.

bread, pastry and charcuterie made in-house.
OPPOSITE A spring tulip display in the Victorian Fragrance
Garden. The gardeners change the floral displays from
season to season, so there's always something new to
experience for returning visitors.





he talents of South African style-setter Karen Roos are already legendary. Nine years ago, this visionary and her husband resurrected the previously neglected Babylonstoren farm near Paarl, which today draws visitors from all over the world.

In 2013, the couple bought Hadspen House and its surrounding 120 hectares of land in Somerset, Emily Estate – a property that once belonged to generations of Emily Hobhouse's family. With the help of French architect Patrice Taravella and a theatre full of skilled artisans, Karen, the creative director, re-shaped the estate into gardens, potagers, lawns, ponds, wooden walkways, hornbeam hedges, and a maze of 460 apple trees inspired by gardens of the baroque period. They make cider on the estate, and there are restaurants, a garden shop, and a hotel and spa – due to open on 29 August.

Renamed for the protected newts that occur here, The Newt in Somerset fuses 2000 years of British horticultural fashions and traditions with contemporary South African design.



BELOW LEFT This pond – hauled to the Parabola from elsewhere on the estate – used to be a cider mill in which apples were crushed before the juice was extracted to make cider. The chairs are from the Danish brand HAY's Palissade outdoor furniture collection.

OPPOSITE The Viper suspended walkway, made of curved steel and timber, winds through the treetops in the Deer Park, offering views of the Somerset landscape beyond the estate. It was designed and built by the two South Africans who created the Boomslang walkway at Kirstenbosch, architect Mark Thomas and engineer Harry Fagan.

LOCATION

The Newt in Somerset is on a working country estate between Bruton and Castle Cary in south-west England

HOW TO GET THERE

Travel by train to Castle Cary with Great Western Railway, or find road directions on the website

VISITING HOURS

1 May – 30 September
10 am – 6 pm; 1 October –
30 April 10 am – 4.30 pm;
last entrance 1 hour
before closing

ENTRANCE FEE

Adults £15, children £7

WEBSITE

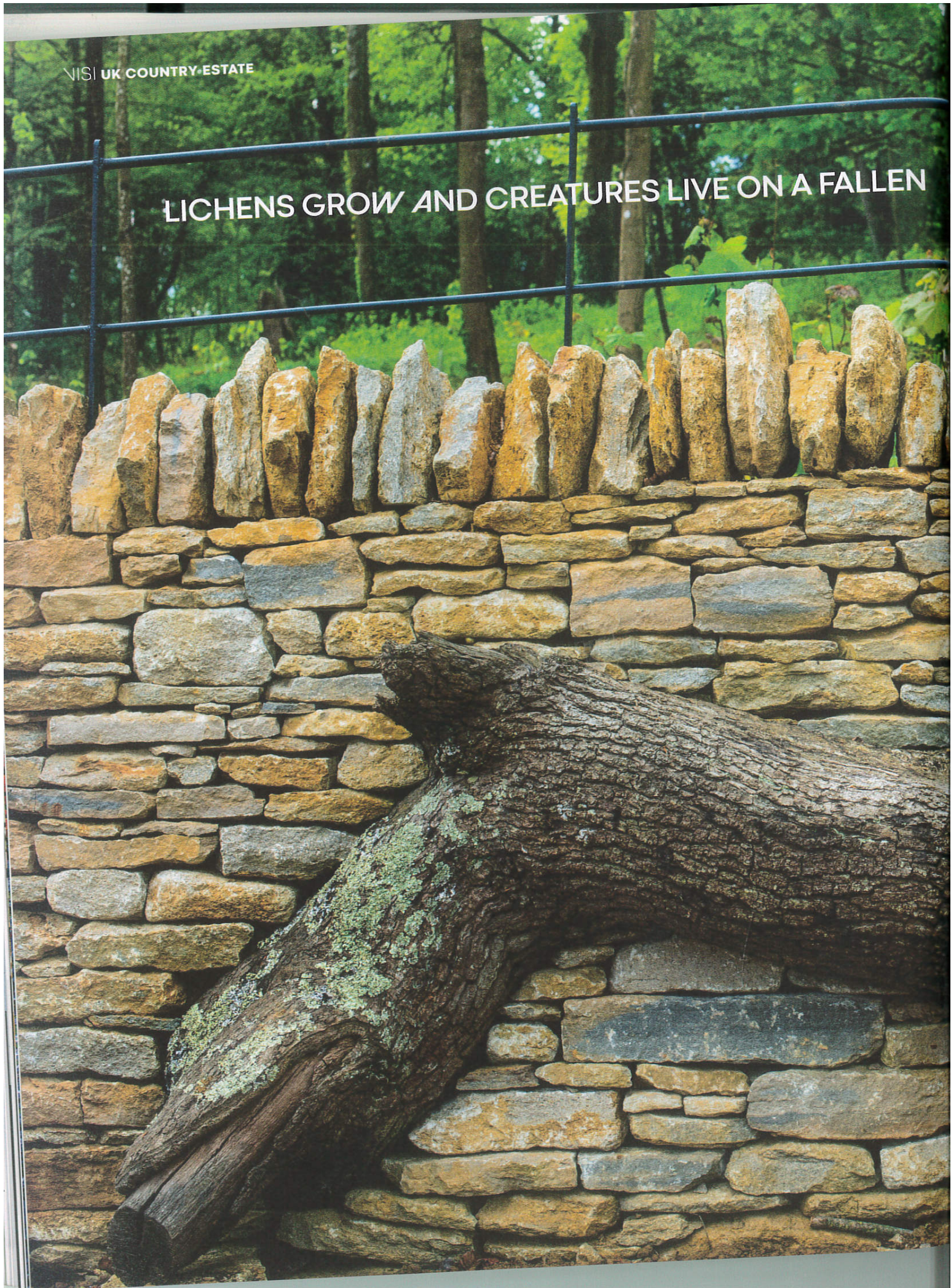
thenewtinsomerset.com



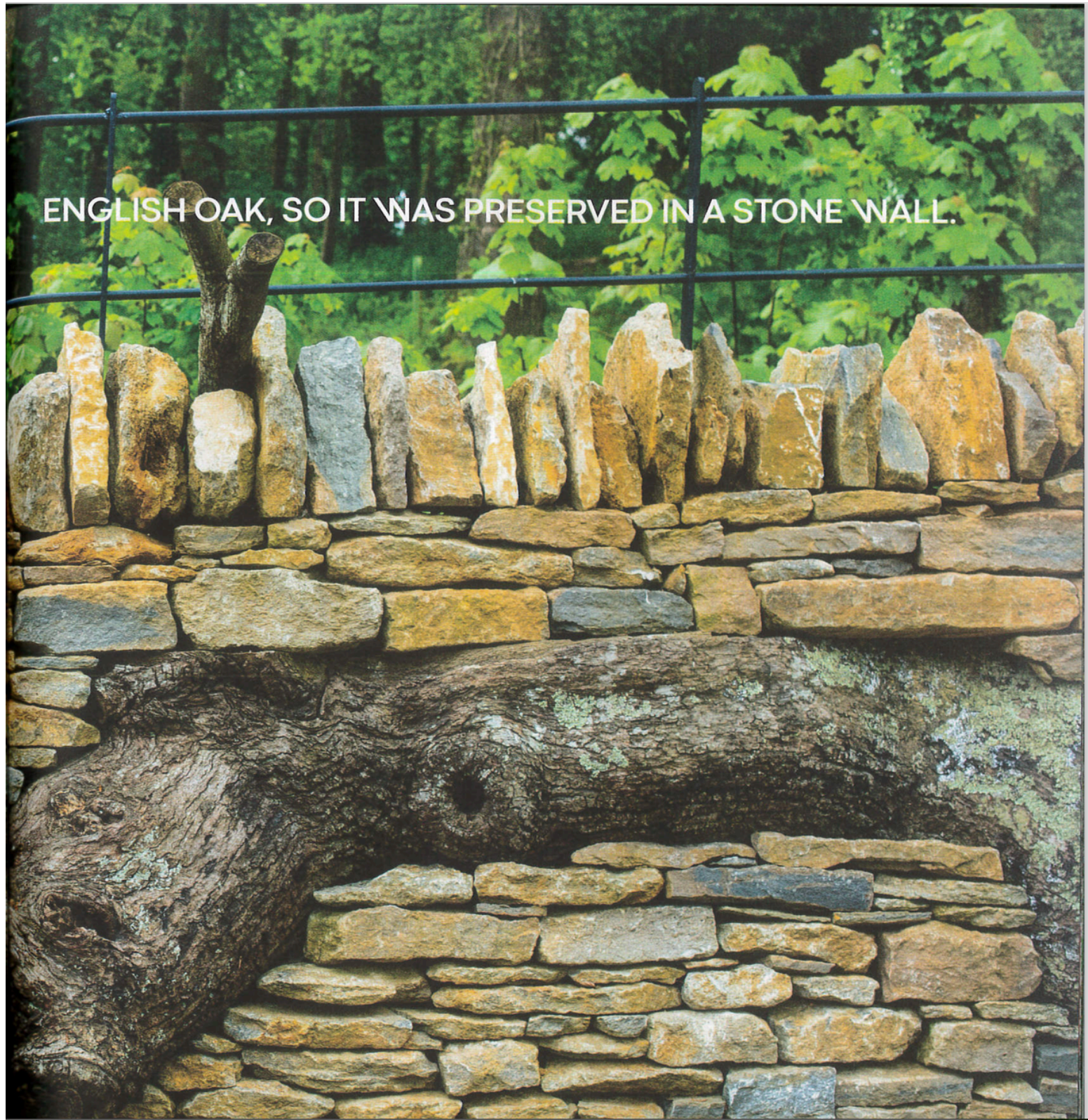
THE ESTATE ONCE BELONGED TO GENERATIONS
OF EMILY HOBHOUSE'S FAMILY

VISI UK COUNTRY ESTATE

LICHENS GROW AND CREATURES LIVE ON A FALLEN



ENGLISH OAK, SO IT WAS PRESERVED IN A STONE WALL.



NISI UK COUNTRY ESTATE

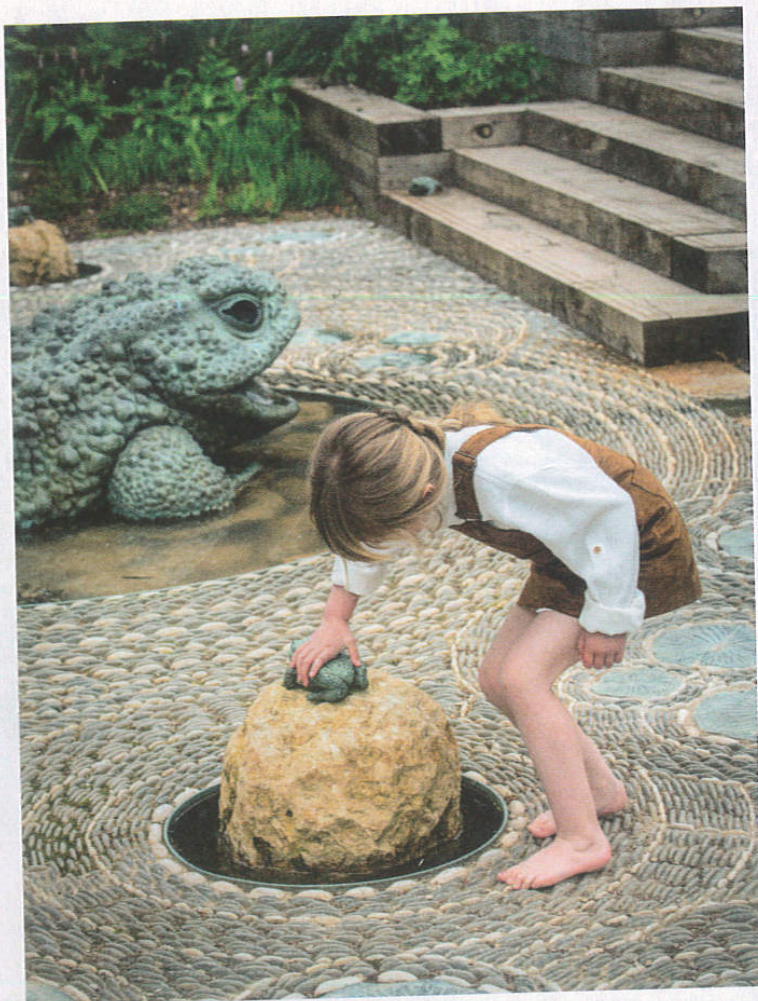
The Threshing Barn is a triple-volume limestone-and-glass structure based on a traditional farm building but masterfully reimagined with modern design elements and decor. Guests are welcomed here. The kinetic lighting installations by Studio Drift - Amsterdam-based artistic duo Ralph Nauta and Lonneke Gordijn - symbolise re-establishing the connections between humans and earth. The benches are by multi award-winning local furniture brand Houtlander.

OPPOSITE The UK consumes the most cider in the world, and there are an estimated 25 cider producers in Somerset alone. The Newt has a state-of-the-art cider press and cellar, and uses cold-fermentation processes to retain the full flavour of the fruit, so no sugar or water are added. The Cyder Café features Bistroot picnic tables by Extremis and furniture from the Fermob Luxembourg range.






UK COUNTRY ESTATE



OVE The estate is home to three newt species native to the UK, one of which is the great crested newt - is endangered. Great care is taken to protect the habitat of these amphibians, such as building special ponds for them.

OVE RIGHT In the modern water garden, children delight in bronze fairy-like frogs in various sizes that unexpectedly squirt water. The stone mosaic was created by a talented contractor working at The Newt during construction. **IGHT** Porky Hefer's human-scale weaver nests have been wowing visitors to Babylonstoren and Cape Town's Company Gardens, and now visitors to The Newt are in for a treat, too.



A large photograph of a country estate. In the foreground, a field of tall green grass with numerous small purple flowers stretches across the bottom. A dense, low hornbeam hedge runs horizontally across the middle ground. Behind the hedge, a small, single-story stone building with a dark roof, identified as the Fowl House, sits on a green lawn. To the left of the Fowl House, several tall, leafy trees stand, and among them are three circular, woven seating nooks that look like weaver nests. The background is filled with more trees and a blue sky with scattered white clouds.

A hornbeam hedge borders the Lower Egg, in the middle of which is the Fowl House, home to chickens and ducks. Among the trees are a few of designer Porky Hefer's woven seating nooks that look like weaver nests.

OPPOSITE Everything grown in the walled Kitchen Garden can be sampled at the Garden Café, where the menu keeps getting updated to reflect what's in season.

