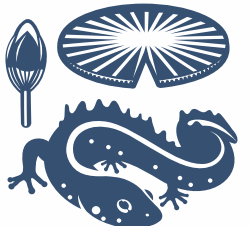
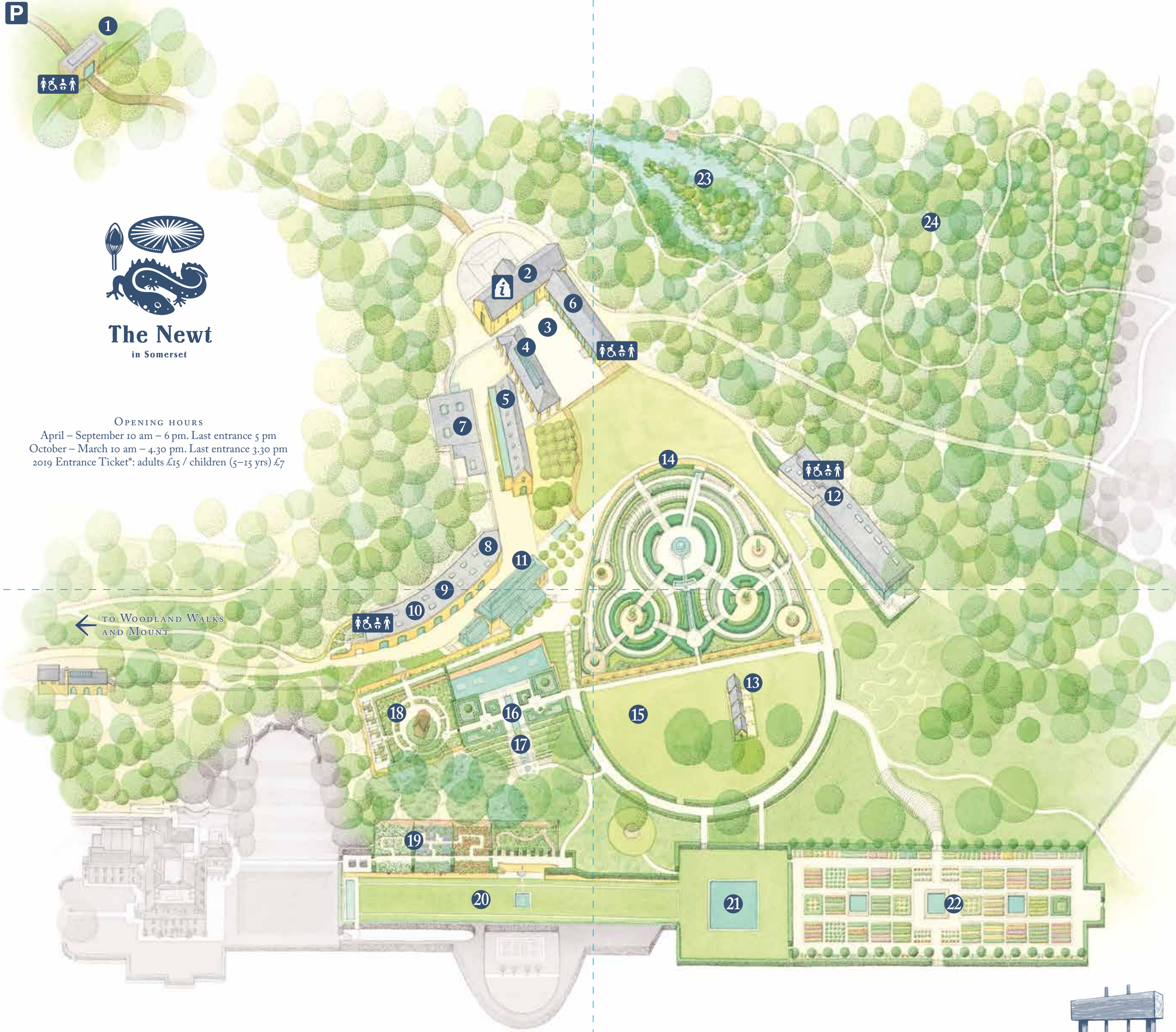


From the egg to the apple

Ab ovo usque ad malus is Latin for 'From the egg to the apple' or 'From start to finish', as in *hors d'oeuvre* to dessert. The phrase inspired us to create an historical timeline for the Estate, with individual gardens and landscapes shaped by ideas, skills and traditions from past to present. Only plants and trees authentic to the period are grown in each garden – though sometimes with a modern twist. Roam the Estate, and you'll travel through two thousand years of history.

- 1** **GATEHOUSE**
Tickets are sold here.
- 2** **THRASHING BARN**
Information, tour booking, first aid and season tickets.
- 3** **FARMYARD**
Meet here for daily Garden Tour.
- 4** **CYDER PRESS**
Daily apple pressing and light snacks and drinks at the Cyder Press Bar.
- 5** **CYDER CELLAR**
Home of our unique cyder-making process.
- 6** **HOUSE AND GARDEN SHOP**
Celebrating the artisanal skills of our friends.
- 7** **BAKERY**
Expertly crafting light meals and all our bread and pastries from local, organic ingredients.
- 8** **FARM SHOP**
Estate produce and the finest, traditionally made foods.
- 9** **MUSHROOM HOUSE**
Porcini and field mushrooms grown for our restaurants.
- 10** **COLLEGE**
Join workshops: details from the Threshing Barn.
- 11** **GREENHOUSE**
Evolving displays of exotica introduced by Victorian plant hunters and collectors: tropical fruit trees, succulents, ferns, orchids and lotus.
- 12** **GARDEN CAFÉ**
A perfect vantage point over the gardens that grow the food you will eat here.
- 13** **FOWL HOUSE**
Where our ducks and chickens lay their eggs.
- 14** **PARABOLA**
Nestled inside the egg-shaped Parabola you'll find a maze of apples. Inspired by gardens of the Baroque period, apple trees from across these isles are displayed by county. We celebrate every aspect of this miraculous fruit, from training saplings to making world-class cyder.
- 15** **LOWER EGG**
In contrast to the sensory stimulation of the Parabola, a serenely curved hornbeam hedge borders this simple lawn. Snuggle down with ducks and chickens.
- 16** **VICTORIAN FRAGRANCE GARDEN**
A passion for fragrant formal planting scented the air of Victorian gardens with violets, roses, box . . . Recalibrate your senses here.
- 17** **CASCADE**
From iris-edged ponds, rills cascade down the modern garden. Look out for our resident newts, but be careful not to approach the Giant Toad and her children: they have vile tempers!
- 18** **COTTAGE GARDEN**
Gertrude Jekyll-inspired drifts of colour symbolise the optimism and creative flowering of the Belle Epoque, before the First World War destroyed it all.
- 19** **COLOUR GARDENS**
Colour, form and texture are celebrated in these garden rooms, but beware: intense hues can spark emotions!
- 20** **LONG WALK**
You can detect the restrained hand of the Landscape Movement in this elegant avenue running East from the Georgian house.
- 21** **BATHING POND**
Imagine the bathing costumes this pond has witnessed over the centuries!
- 22** **KITCHEN GARDEN**
Ornamental kitchen gardens or *potagers* evolved through French style into a veg display to please the eye and feed the body. You can sample what we grow here in the Garden Café.
- 23** **MARL PIT**
Created by the ancient practice of 'marling', or digging out lime-rich deposits to improve agricultural soil. This tranquil place, with its island, evokes Avalon (the likely site of Camelot is close by), where our King Arthur went to die.
- 24** **MARL PIT COPSE**
Spring bluebells and a gentle woodland walk.

WCs



The Newt
in Somerset

OPENING HOURS
April – September 10 am – 6 pm. Last entrance 5 pm
October – March 10 am – 4.30 pm. Last entrance 3.30 pm
2019 Entrance Ticket*: adults £15 / children (5–15 yrs) £7

***YOUR ENTRANCE TICKET**
Download the free Candide app to convert your ticket into a 2019 Season Ticket, and visit as many times as you like until 31 December 2019.

OUR EATERIES champion Somerset fare, using Estate meats and ingredients that we have grown or carefully sourced.

DAILY GARDEN TOUR
Starts at 10:30 am in the Farmyard. Booking essential.

DAILY CYDER PRESS TOURS
Start at 11 am and 2 pm by the Apple Pit. Booking essential.

OVER 250 VARIETIES of apple in the Parabola alone!

KINDLY NOTE that areas shaded grey are reserved for hotel guests.

